

ALIEN

ALIEN is a bollard by unusual forms: the rigorous design has been studied in detail to be able to perform their functions: the extreme mechanical resistance and against vandalism and the light distribution that allows large interdistances of installation while maintaining high values of uniformity of lighting. All these make ALIEN the ideal fixture for walkways and road crossings in the public areas.





TECHNICAL INFORMATION

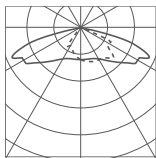
Body made of extruded, corrosion resistant, aluminium alloy. Head made in corrosion resistant and painted die-cast aluminium. Protection with anodizing treatment, epoxy powder base coating and polyester painting. A4 stainless steel screws. Product supplied with inspection door. Gore valve to prevent condensation inside the product.



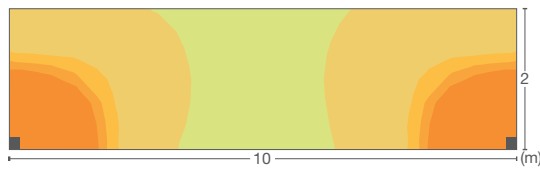
WHITE
LED
230V



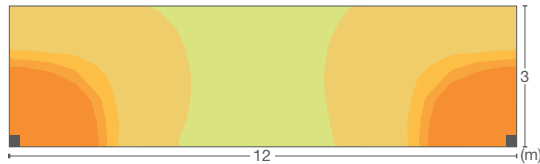
42 70 119
LED 3000K CRI>80
 16W / 2200 lm LED data
21,6W / 1815 lm Real data
 220-240V 0/50/60Hz
Thermal LED protection
 Height 1150 mm
 A / A+ / A++
 Cable length 1,5 m (2 x 1 mm²)



493
cd/klm



15W LED 3000K
 H. 1,15m
 Distance 10m
 Large 2m
 Em = 68 lux
 41 lux
 31 lux
 21 lux
 10 lux
 1 lux



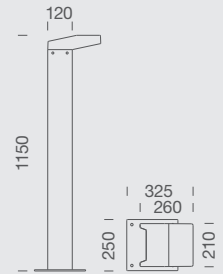
15W LED 3000K
 H. 1,15m
 Distance 12m
 Large 3m
 Em = 38 lux
 31 lux
 21 lux
 11 lux
 2 lux
 1 lux

PRODUCT INFORMATION

IP66
 IK 10
 4 mm thick extra clear glass
 IP68 connector included

AVAILABLE COLOURS
 .08 anthracite
 Other colours on request

TECHNICAL DATA



Available upon request

LED
 LED COLOURS
 TEMPERATURE
 4000K

Other LED colours
 available on request

COLORS SURFACE FINISH

- .01 black
- .02 white
- .06 grey
- .07 corten
- .09 bronze

ACCESSORIES



FIXING
 89 50 090 - Tie rod

More information:

Urban Elements ApS
 www.urban-elements.dk
 info@urban-elements.dk
 Tlf. + 45 48 28 80 99

